

Ielas apgaismojums Līvānos - Fabrikas, Celtniecības ielu rajonos

Partner for Contact:

Order No.:

Company:

Customer No.:

Date: 04.02.2016

Operator: Ilona Kozare

SIA VIZULO Solutions

Ganību dambis 7a, Rīga, Latvija

Operator Ilona Kozare
 Telephone + 371 28848361
 Fax
 e-Mail ilona.kozare@vizulo.com

Table of contents

Ielas apgaismojums Līvānos - Fabrikas, Celtniecības ielu rajonos	
Project Cover	1
Table of contents	2
Luminaire parts list	3
Eulumdat VIZULO STORK LITTLE BROTHER 68 W SRL 068 740 04 01 2 S N N...	
Luminaire Data Sheet	4
SRL 057 740 02 221 S N DD 06 1 SRL 057 740 02 221 S N DD 06 1	
Luminaire Data Sheet	5
SRL066 740 02 221 S N DD 06 1 SRL 066 740 02 221 S N DD 06 1	
Luminaire Data Sheet	6
Road 1 - Variants B	
Planning data	7
Luminaire parts list	8
Photometric Results	9
3D Rendering	11
False Colour Rendering	12
Valuation Fields	
Valuation Field Roadway 1	
Observer	
Observer 1	
Isolines (L)	13
Observer 2	
Isolines (L)	14
Road 1 - Variants A	
Planning data	15
Luminaire parts list	16
Photometric Results	17
3D Rendering	19
False Colour Rendering	20
Valuation Fields	
Valuation Field Roadway 1	
Observer	
Observer 1	
Isolines (L)	21
Observer 2	
Isolines (L)	22
Road 2	
Planning data	23
Luminaire parts list	24
Photometric Results	25
3D Rendering	27
False Colour Rendering	28
Valuation Fields	
Valuation Field Roadway 1	
Observer	
Observer 1	
Isolines (L)	29
Observer 2	
Isolines (L)	30

SIA VIZULO Solutions

Ganību dambis 7a, Rīga, Latvija

Operator Ilona Kozare

Telephone + 371 28848361

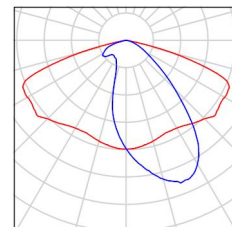
Fax

e-Mail ilona.kozare@vizulo.com

Ielas apgaismojums Līvānos - Fabrikas, Celtniecības ielu rajonos / Luminaire parts list

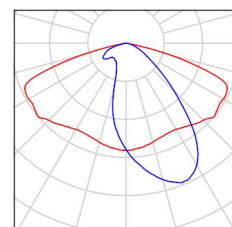
6 Pieces SRL 057 740 02 221 S N DD 06 1 SRL 057 740 02 221 S N DD 06 1
Article No.: SRL 057 740 02 221 S N DD 06 1
Luminous flux (Luminaire): 6185 lm
Luminous flux (Lamps): 6185 lm
Luminaire Wattage: 56.9 W
Luminaire classification according to CIE: 100
CIE flux code: 42 75 97 100 100
Fitting: 1 x 2 module (Correction Factor 1.000).

See our luminaire catalog for an image of the luminaire.



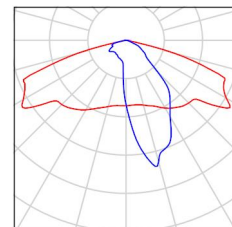
6 Pieces SRL 066 740 02 221 S N DD 06 1 SRL 066 740 02 221 S N DD 06 1
Article No.: SRL 066 740 02 221 S N DD 06 1
Luminous flux (Luminaire): 6972 lm
Luminous flux (Lamps): 6972 lm
Luminaire Wattage: 65.9 W
Luminaire classification according to CIE: 100
CIE flux code: 42 75 97 100 100
Fitting: 1 x 2 module (Correction Factor 1.000).

See our luminaire catalog for an image of the luminaire.



6 Pieces Eulumdat VIZULO STORK LITTLE BROTHER 68 W SRL 068 740 04 01 2 S N DD 03 1
Article No.: VIZULO STORK LITTLE BROTHER 68 W
Luminous flux (Luminaire): 6800 lm
Luminous flux (Lamps): 6800 lm
Luminaire Wattage: 68.0 W
Luminaire classification according to CIE: 100
CIE flux code: 40 73 97 100 100
Fitting: 1 x Stork 2 modules (Correction Factor 1.000).

See our luminaire catalog for an image of the luminaire.



SIA VIZULO Solutions

Ganību dambis 7a, Rīga, Latvija

Operator Ilona Kozare

Telephone + 371 28848361

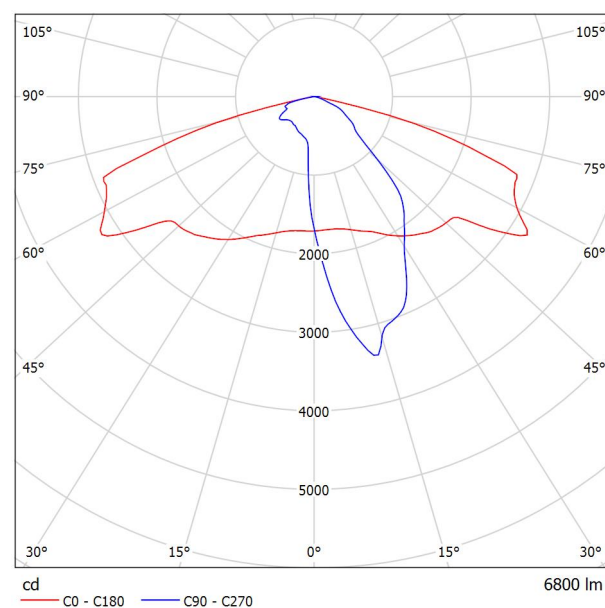
Fax

e-Mail ilona.kozare@vizulo.com

Eulumdat VIZULO STORK LITTLE BROTHER 68 W SRL 068 740 04 01 2 S N ND 03 1 / Luminaire Data Sheet

See our luminaire catalog for an image of the luminaire.

Luminous emittance 1:



Luminaire classification according to CIE: 100
CIE flux code: 40 73 97 100 100

Due to missing symmetry properties, no UGR table can be displayed for this luminaire.

SIA VIZULO Solutions

Ganību dambis 7a, Rīga, Latvija

Operator Ilona Kozare

Telephone + 371 28848361

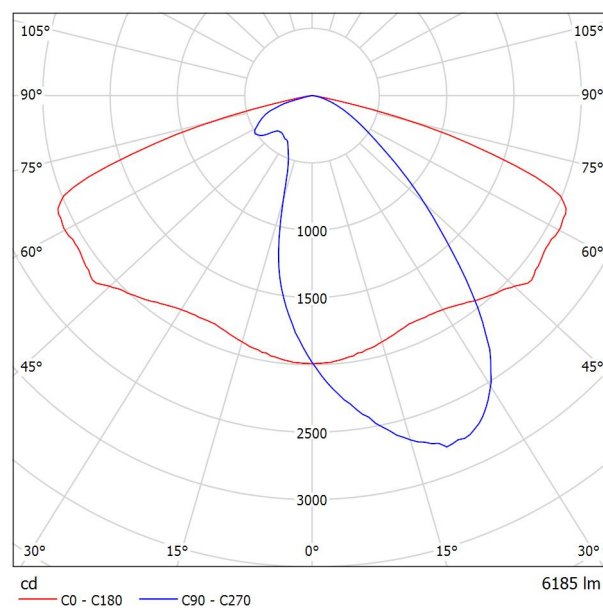
Fax

e-Mail ilona.kozare@vizulo.com

SRL 057 740 02 221 S N DD 06 1 SRL 057 740 02 221 S N DD 06 1 / Luminaire Data Sheet

Luminous emittance 1:

See our luminaire catalog for an image of the luminaire.



Luminaire classification according to CIE: 100
CIE flux code: 42 75 97 100 100

Due to missing symmetry properties, no UGR table can be displayed for this luminaire.

SIA VIZULO Solutions

Ganību dambis 7a, Rīga, Latvija

Operator Ilona Kozare

Telephone + 371 28848361

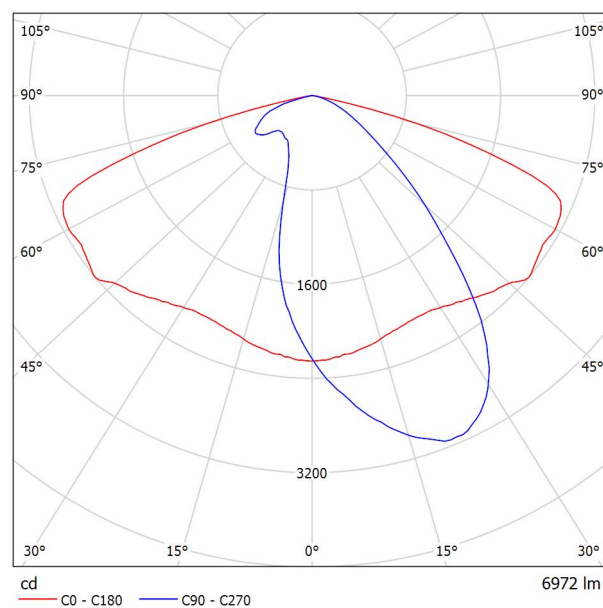
Fax

e-Mail ilona.kozare@vizulo.com

SRL 066 740 02 221 S N DD 06 1 SRL 066 740 02 221 S N DD 06 1 / Luminaire Data Sheet

Luminous emittance 1:

See our luminaire catalog for an image of the luminaire.



Luminaire classification according to CIE: 100
CIE flux code: 42 75 97 100 100

Due to missing symmetry properties, no UGR table can be displayed for this luminaire.

SIA VIZULO Solutions

Ganību dambis 7a, Rīga, Latvija

Operator Ilona Kozare
Telephone + 371 28848361

Fax

e-Mail ilona.kozare@vizulo.com

Road 1 - Variants B / Planning data

Street Profile

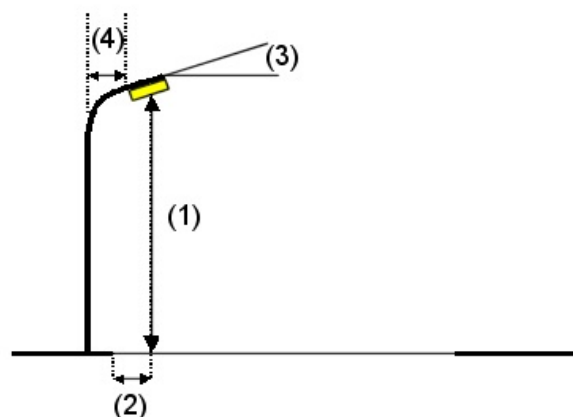
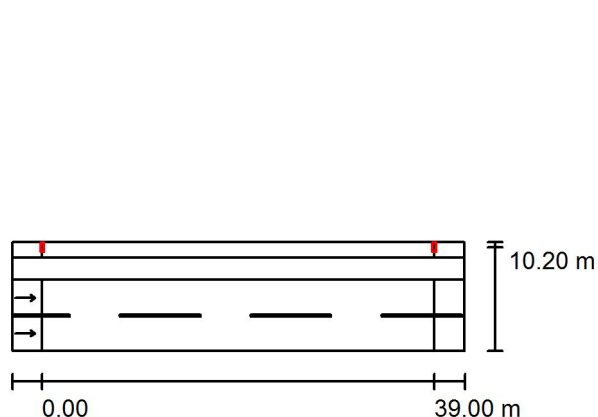
Sidewalk 1 (Width: 1.500 m)

Grass Strip 1 (Width: 2.200 m)

Roadway 1 (Width: 7.000 m, Number of lanes: 2, tarmac: R3, q0: 0.070)

Maintenance factor: 0.80

Luminaire Arrangements



Luminaire:	Eulumdat VIZULO STORK LITTLE BROTHER 68 W SRL 068 740 04 01 2 S	
	N DD 03 1	
Luminous flux (Luminaire):	6800 lm	Maximum luminous intensities
Luminous flux (Lamps):	6800 lm	at 70°: 932 cd/klm
Luminaire Wattage:	68.0 W	at 80°: 124 cd/klm
Arrangement:	Single row, top	at 90°: 2.74 cd/klm
Pole Distance:	39.000 m	Any direction forming the specified angle from the downward vertical, with the luminaire installed for use.
Mounting Height (1):	10.000 m	Arrangement complies with luminous intensity class G2.
Height:	9.953 m	Arrangement complies with glare index class D.6.
Overhang (2):	-3.196 m	
Boom Angle (3):	5.0 °	
Boom Length (4):	1.000 m	

SIA VIZULO Solutions

Ganību dambis 7a, Rīga, Latvija

Operator Ilona Kozare

Telephone + 371 28848361

Fax

e-Mail ilona.kozare@vizulo.com

Road 1 - Variants B / Luminaire parts list

Eulumdat VIZULO STORK LITTLE BROTHER 68
W SRL 068 740 04 01 2 S N DD 03 1
Article No.: VIZULO STORK LITTLE BROTHER
68 W

Luminous flux (Luminaire): 6800 lm

Luminous flux (Lamps): 6800 lm

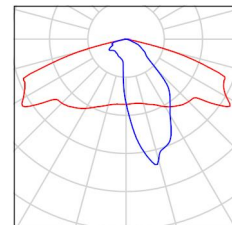
Luminaire Wattage: 68.0 W

Luminaire classification according to CIE: 100

CIE flux code: 40 73 97 100 100

Fitting: 1 x Stork 2 modules (Correction Factor
1.000).

See our luminaire
catalog for an image of
the luminaire.

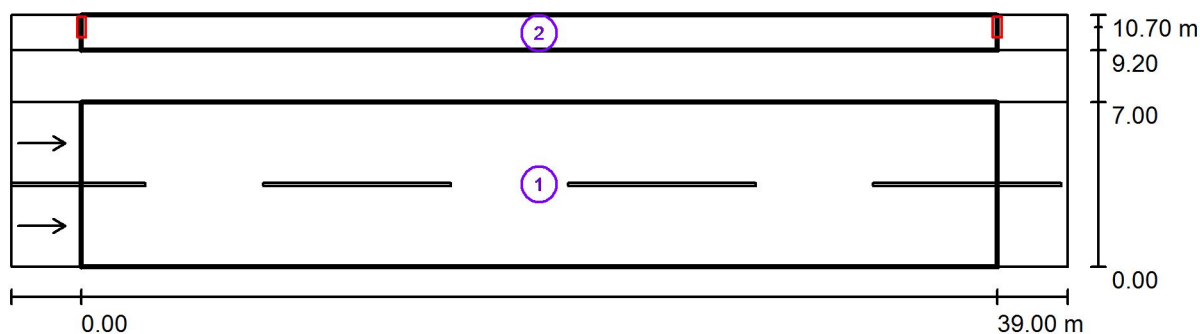


SIA VIZULO Solutions

Ganību dambis 7a, Rīga, Latvija

Operator Ilona Kozare
Telephone + 371 28848361Fax
e-Mail ilona.kozare@vizulo.com

Road 1 - Variants B / Photometric Results



Maintenance factor: 0.80

Scale 1:322

Calculation Field List

- 1 Valuation Field Roadway 1
 Length: 39.000 m, Width: 7.000 m
 Grid: 13 x 6 Points
 Accompanying Street Elements: Roadway 1.
 tarmac: R3, q0: 0.070
 Selected Lighting Class: ME5

(All lighting performance requirements are met.)

	L_{av} [cd/m ²]	U0	UI	TI [%]	SR
Calculated values:	0.52	0.37	0.62	14	0.65
Required values according to class:	≥ 0.50	≥ 0.35	≥ 0.40	≤ 15	≥ 0.50
Fulfilled/Not fulfilled:	✓	✓	✓	✓	✓

SIA VIZULO Solutions

Ganību dambis 7a, Rīga, Latvija

Operator Ilona Kozare
Telephone + 371 28848361Fax
e-Mail ilona.kozare@vizulo.com

Road 1 - Variants B / Photometric Results

Calculation Field List

- 2 Valuation Field Sidewalk 1
Length: 39.000 m, Width: 1.500 m
Grid: 13 x 3 Points
Accompanying Street Elements: Sidewalk 1.
Selected Lighting Class: S4 (All lighting performance requirements are met.)

	E_{av} [lx]	E_{min} [lx]
Calculated values:	6.54	3.81
Required values according to class:	≥ 5.00	≥ 1.00
Fulfilled/Not fulfilled:	✓	✓

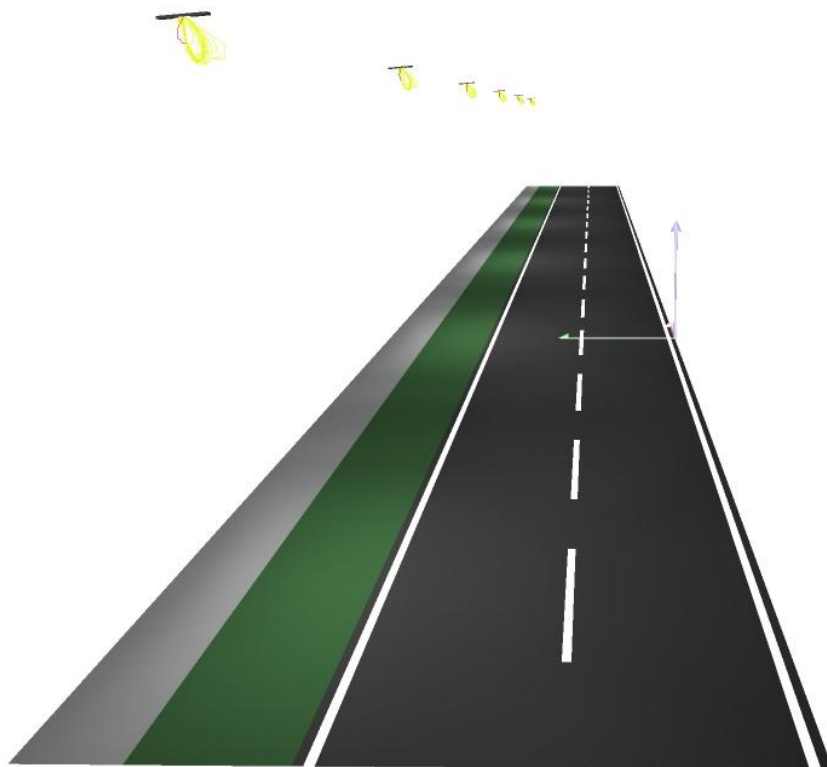
SIA VIZULO Solutions

Ganību dambis 7a, Rīga, Latvija

Operator Ilona Kozare
Telephone + 371 28848361

Fax
e-Mail ilona.kozare@vizulo.com

Road 1 - Variants B / 3D Rendering



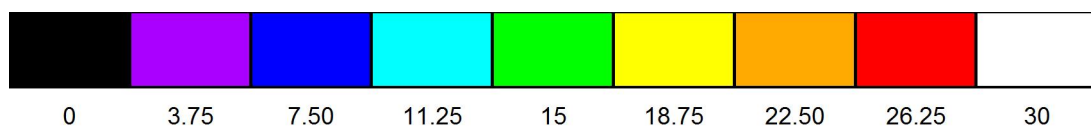
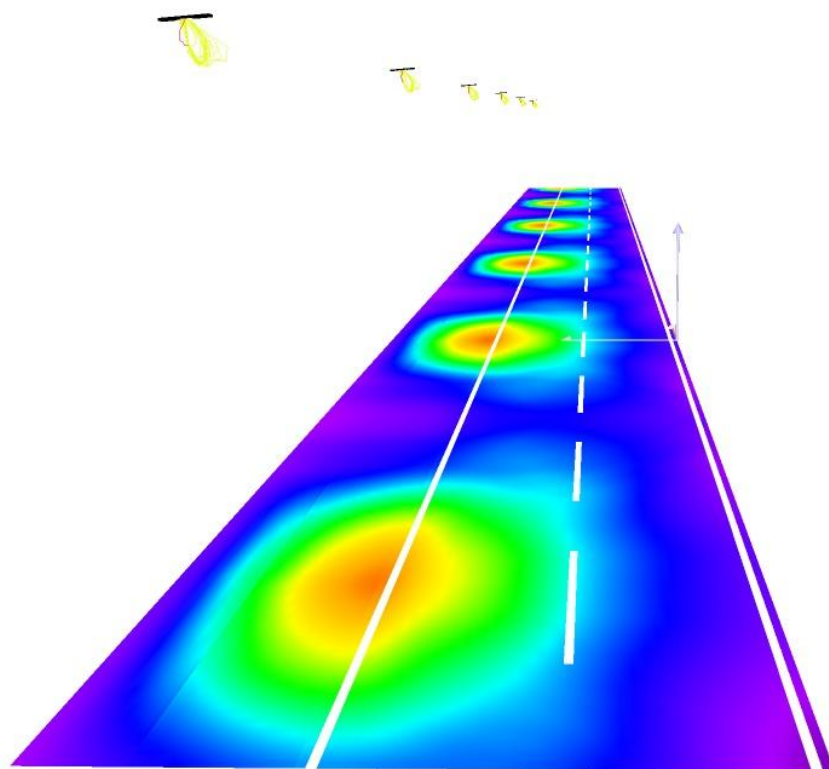
SIA VIZULO Solutions

Ganību dambis 7a, Rīga, Latvija

Operator Ilona Kozare
Telephone + 371 28848361

Fax
e-Mail ilona.kozare@vizulo.com

Road 1 - Variants B / False Colour Rendering



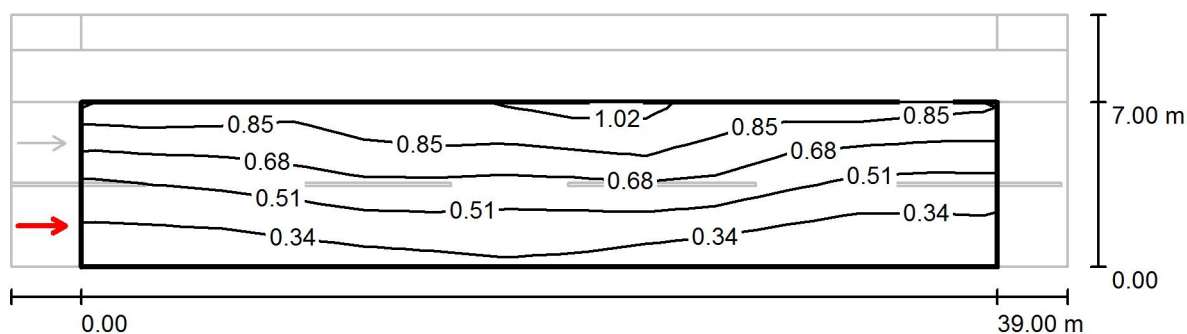
SIA VIZULO Solutions

Ganību dambis 7a, Rīga, Latvija

Operator Ilona Kozare
Telephone + 371 28848361

Fax

e-Mail ilona.kozare@vizulo.com

Road 1 - Variants B / Valuation Field Roadway 1 / Observer 1 / Isolines (L)

Values in Candela/m², Scale 1 : 322

Grid: 13 x 6 Points

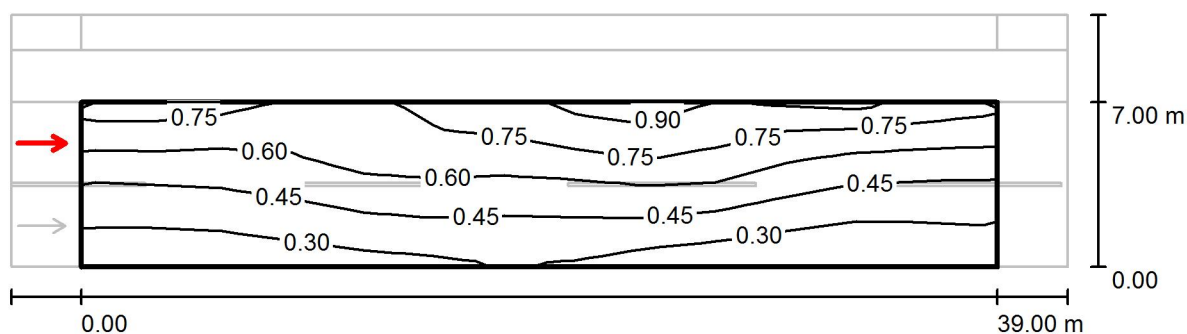
Observer Position: (-60.000 m, 1.750 m, 1.500 m)

tarmac: R3, q0: 0.070

	L_{av} [cd/m²]	U0	UI	TI [%]
Calculated values:	0.58	0.37	0.62	8
Required values according to class ME5:	≥ 0.50	≥ 0.35	≥ 0.40	≤ 15
Fulfilled/Not fulfilled:	✓	✓	✓	✓

SIA VIZULO Solutions

Ganību dambis 7a, Rīga, Latvija

Operator Ilona Kozare
Telephone + 371 28848361Fax
e-Mail ilona.kozare@vizulo.com**Road 1 - Variants B / Valuation Field Roadway 1 / Observer 2 / Isolines (L)**

Values in Candela/m², Scale 1 : 322

Grid: 13 x 6 Points

Observer Position: (-60.000 m, 5.250 m, 1.500 m)

tarmac: R3, q0: 0.070

	L_{av} [cd/m²]	U0	UI	TI [%]
Calculated values:	0.52	0.41	0.69	14
Required values according to class ME5:	≥ 0.50	≥ 0.35	≥ 0.40	≤ 15
Fulfilled/Not fulfilled:	✓	✓	✓	✓

SIA VIZULO Solutions

Ganību dambis 7a, Rīga, Latvija

Operator Ilona Kozare

Telephone + 371 28848361

Fax

e-Mail ilona.kozare@vizulo.com

Road 1 - Variants A / Planning data

Street Profile

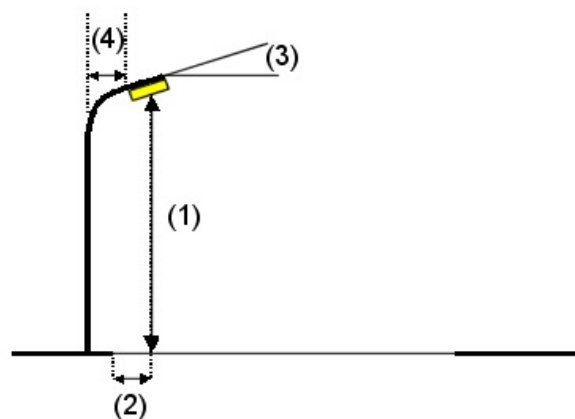
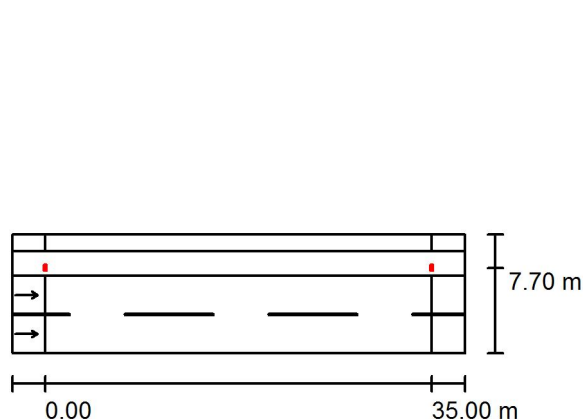
Sidewalk 1 (Width: 1.500 m)

Grass Strip 1 (Width: 2.200 m)

Roadway 1 (Width: 7.000 m, Number of lanes: 2, tarmac: R3, q0: 0.070)

Maintenance factor: 0.80

Luminaire Arrangements



Luminaire:	SRL 057 740 02 221 S N DD 06 1	SRL 057 740 02 221 S N DD 06 1
Luminous flux (Luminaire):	6185 lm	Maximum luminous intensities
Luminous flux (Lamps):	6185 lm	at 70°: 389 cd/klm
Luminaire Wattage:	56.9 W	at 80°: 60 cd/klm
Arrangement:	Single row, top	at 90°: 1.37 cd/klm
Pole Distance:	35.000 m	Any direction forming the specified angle from the downward vertical, with the luminaire installed for use.
Mounting Height (1):	10.000 m	No luminous intensities above 90°.
Height:	9.855 m	Arrangement complies with luminous intensity class G4.
Overhang (2):	-0.696 m	Arrangement complies with glare index class D.6.
Boom Angle (3):	0.0 °	
Boom Length (4):	1.000 m	

SIA VIZULO Solutions

Ganību dambis 7a, Rīga, Latvija

Operator Ilona Kozare

Telephone + 371 28848361

Fax

e-Mail ilona.kozare@vizulo.com

Road 1 - Variants A / Luminaire parts list

SRL 057 740 02 221 S N DD 06 1 SRL 057 740
02 221 S N DD 06 1

Article No.: SRL 057 740 02 221 S N DD 06 1

Luminous flux (Luminaire): 6185 lm

Luminous flux (Lamps): 6185 lm

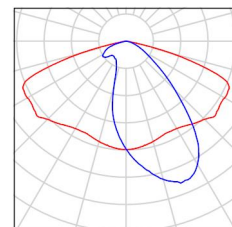
Luminaire Wattage: 56.9 W

Luminaire classification according to CIE: 100

CIE flux code: 42 75 97 100 100

Fitting: 2 module (Correction Factor 1.000).

See our luminaire
catalog for an image of
the luminaire.



SIA VIZULO Solutions

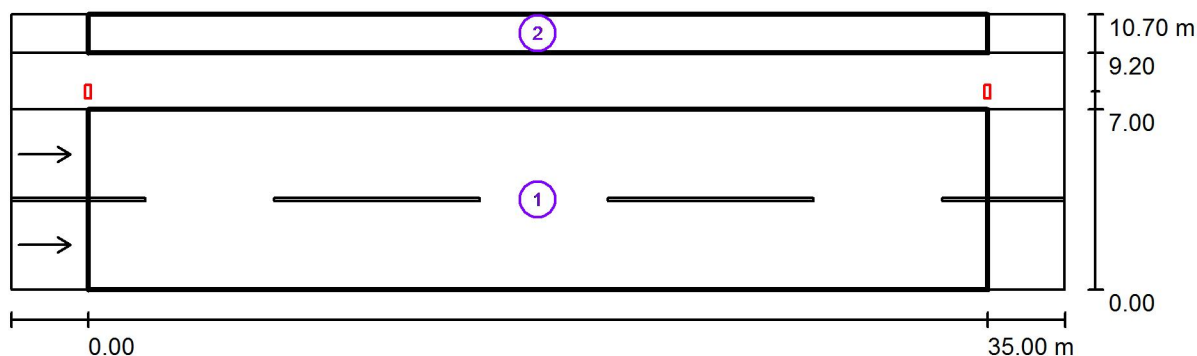
Ganību dambis 7a, Rīga, Latvija

Operator Ilona Kozare

Telephone + 371 28848361

Fax

e-Mail ilona.kozare@vizulo.com

Road 1 - Variants A / Photometric Results

Maintenance factor: 0.80

Scale 1:294

Calculation Field List

- 1 Valuation Field Roadway 1
 Length: 35.000 m, Width: 7.000 m
 Grid: 12 x 6 Points
 Accompanying Street Elements: Roadway 1.
 tarmac: R3, q0: 0.070
 Selected Lighting Class: ME5

(All lighting performance requirements are met.)

	L_{av} [cd/m ²]	U0	UI	TI [%]	SR
Calculated values:	0.51	0.56	0.78	6	0.63
Required values according to class:	≥ 0.50	≥ 0.35	≥ 0.40	≤ 15	≥ 0.50
Fulfilled/Not fulfilled:	✓	✓	✓	✓	✓

SIA VIZULO Solutions

Ganību dambis 7a, Rīga, Latvija

Operator Ilona Kozare
Telephone + 371 28848361Fax
e-Mail ilona.kozare@vizulo.com

Road 1 - Variants A / Photometric Results

Calculation Field List

- 2 Valuation Field Sidewalk 1
Length: 35.000 m, Width: 1.500 m
Grid: 12 x 3 Points
Accompanying Street Elements: Sidewalk 1.
Selected Lighting Class: S4 (All lighting performance requirements are met.)

	E_{av} [lx]	E_{min} [lx]
Calculated values:	5.46	3.39
Required values according to class:	≥ 5.00	≥ 1.00
Fulfilled/Not fulfilled:	✓	✓

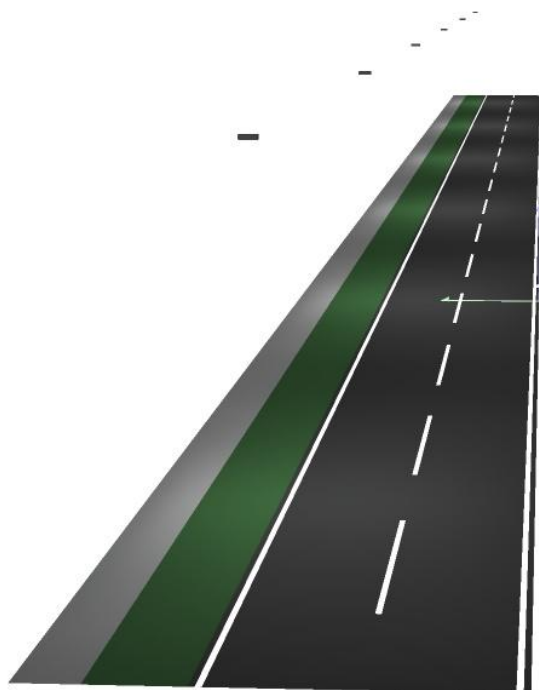
SIA VIZULO Solutions

Ganību dambis 7a, Rīga, Latvija

Operator Ilona Kozare
Telephone + 371 28848361

Fax
e-Mail ilona.kozare@vizulo.com

Road 1 - Variants A / 3D Rendering



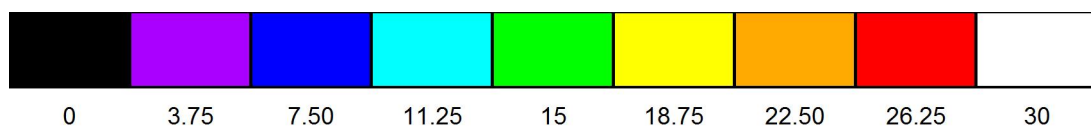
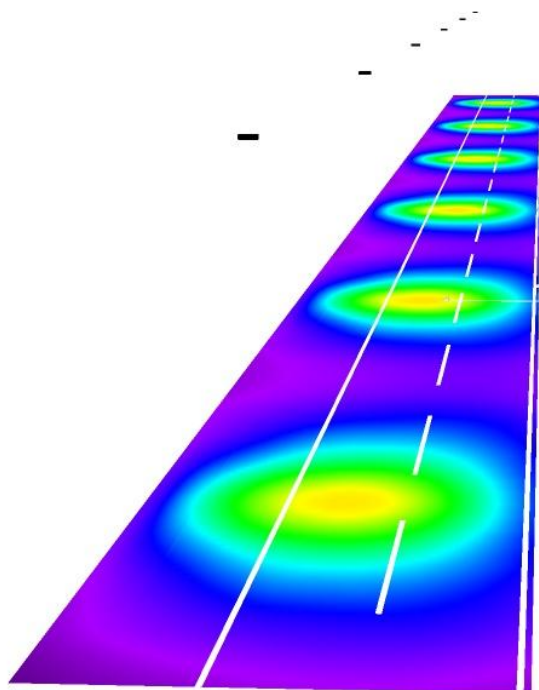
SIA VIZULO Solutions

Ganību dambis 7a, Rīga, Latvija

Operator Ilona Kozare
Telephone + 371 28848361

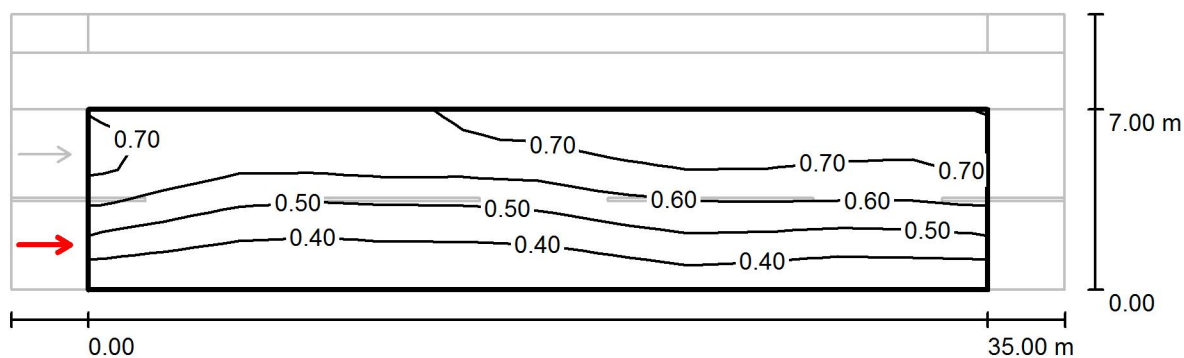
Fax
e-Mail ilona.kozare@vizulo.com

Road 1 - Variants A / False Colour Rendering



SIA VIZULO Solutions

Ganību dambis 7a, Rīga, Latvija

Operator Ilona Kozare
Telephone + 371 28848361Fax
e-Mail ilona.kozare@vizulo.com**Road 1 - Variants A / Valuation Field Roadway 1 / Observer 1 / Isolines (L)**

Values in Candela/m², Scale 1 : 294

Grid: 12 x 6 Points

Observer Position: (-60.000 m, 1.750 m, 1.500 m)

tarmac: R3, q0: 0.070

	L_{av} [cd/m²]	U0	UI	TI [%]
Calculated values:	0.55	0.56	0.79	4
Required values according to class ME5:	≥ 0.50	≥ 0.35	≥ 0.40	≤ 15
Fulfilled/Not fulfilled:	✓	✓	✓	✓

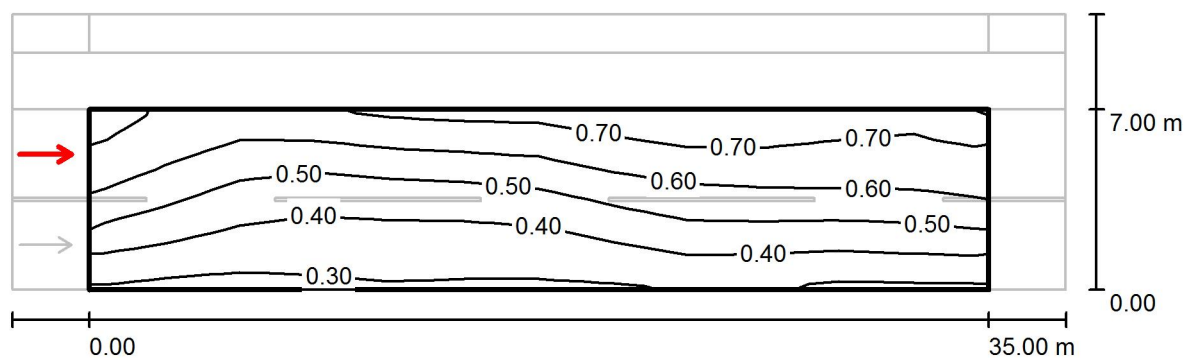
SIA VIZULO Solutions

Ganību dambis 7a, Rīga, Latvija

Operator Ilona Kozare
Telephone + 371 28848361

Fax

e-Mail ilona.kozare@vizulo.com

Road 1 - Variants A / Valuation Field Roadway 1 / Observer 2 / Isolines (L)

Values in Candela/m², Scale 1 : 294

Grid: 12 x 6 Points

Observer Position: (-60.000 m, 5.250 m, 1.500 m)

tarmac: R3, q0: 0.070

	L_{av} [cd/m²]	U0	UI	TI [%]
Calculated values:	0.51	0.57	0.78	6
Required values according to class ME5:	≥ 0.50	≥ 0.35	≥ 0.40	≤ 15
Fulfilled/Not fulfilled:	✓	✓	✓	✓

SIA VIZULO Solutions

Ganību dambis 7a, Rīga, Latvija

Operator Ilona Kozare

Telephone + 371 28848361

Fax

e-Mail ilona.kozare@vizulo.com

Road 2 / Planning data

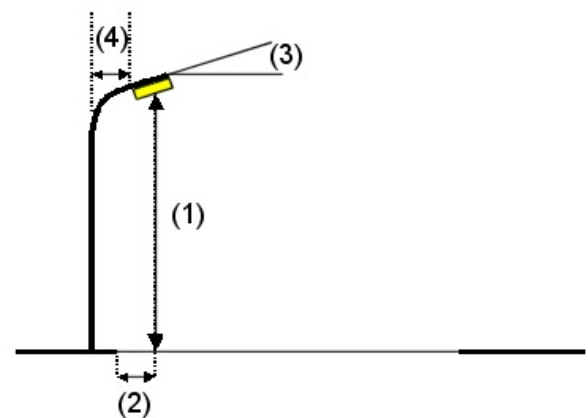
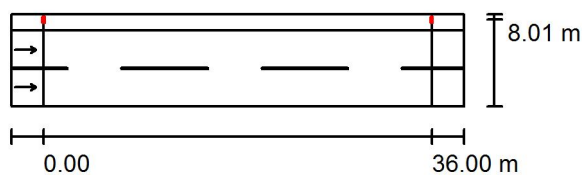
Street Profile

Sidewalk 1 (Width: 1.500 m)

Roadway 1 (Width: 7.000 m, Number of lanes: 2, tarmac: R3, q0: 0.070)

Maintenance factor: 0.80

Luminaire Arrangements



Luminaire:	SRL 066 740 02 221 S N DD 06 1	SRL 066 740 02 221 S N DD 06 1
Luminous flux (Luminaire):	6972 lm	Maximum luminous intensities
Luminous flux (Lamps):	6972 lm	at 70°: 437 cd/klm
Luminaire Wattage:	65.9 W	at 80°: 106 cd/klm
Arrangement:	Single row, top	at 90°: 2.30 cd/klm
Pole Distance:	36.000 m	Any direction forming the specified angle from the downward vertical, with the luminaire installed for use.
Mounting Height (1):	10.000 m	No luminous intensities above 95°.
Height:	9.856 m	Arrangement complies with luminous intensity class G2.
Overhang (2):	-1.000 m	Arrangement complies with glare index class D.6.
Boom Angle (3):	5.0 °	
Boom Length (4):	1.000 m	

SIA VIZULO Solutions

Ganību dambis 7a, Rīga, Latvija

Operator Ilona Kozare

Telephone + 371 28848361

Fax

e-Mail ilona.kozare@vizulo.com

Road 2 / Luminaire parts list

SRL066 740 02 221 S N DD 06 1 SRL 066 740
02 221 S N DD 06 1

Article No.: MRS 066 740 02 221 S N DD 06 1

Luminous flux (Luminaire): 6972 lm

Luminous flux (Lamps): 6972 lm

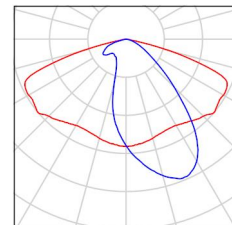
Luminaire Wattage: 65.9 W

Luminaire classification according to CIE: 100

CIE flux code: 42 75 97 100 100

Fitting: 1 2 module (Correction Factor 1.000).

See our luminaire
catalog for an image of
the luminaire.



SIA VIZULO Solutions

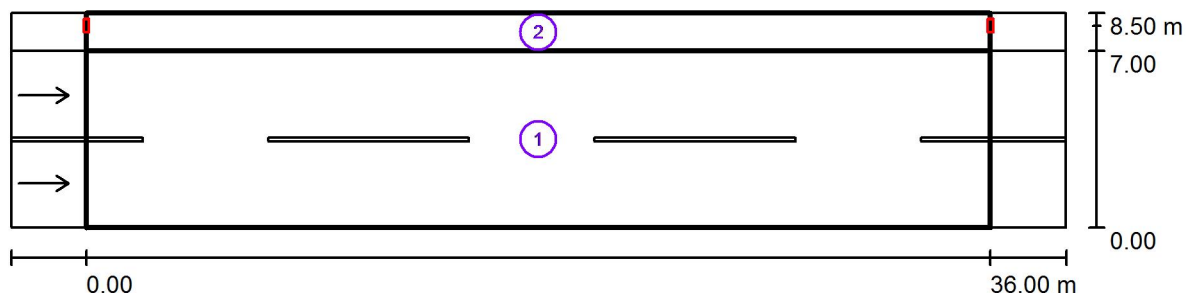
Ganību dambis 7a, Rīga, Latvija

Operator Ilona Kozare

Telephone + 371 28848361

Fax

e-Mail ilona.kozare@vizulo.com

Road 2 / Photometric Results

Maintenance factor: 0.80

Scale 1:301

Calculation Field List

- 1 Valuation Field Roadway 1
 Length: 36.000 m, Width: 7.000 m
 Grid: 12 x 6 Points
 Accompanying Street Elements: Roadway 1.
 tarmac: R3, q0: 0.070
 Selected Lighting Class: ME5

(All lighting performance requirements are met.)

	L_{av} [cd/m ²]	U0	UI	TI [%]	SR
Calculated values:	0.53	0.59	0.75	7	0.64
Required values according to class:	≥ 0.50	≥ 0.35	≥ 0.40	≤ 15	≥ 0.50
Fulfilled/Not fulfilled:	✓	✓	✓	✓	✓

SIA VIZULO Solutions

Ganību dambis 7a, Rīga, Latvija

Operator Ilona Kozare
Telephone + 371 28848361Fax
e-Mail ilona.kozare@vizulo.com

Road 2 / Photometric Results

Calculation Field List


2 Valuation Field Sidewalk 1

Length: 36.000 m, Width: 1.500 m

Grid: 12 x 3 Points

Accompanying Street Elements: Sidewalk 1.

Selected Lighting Class: S4 (Not all lighting performance requirements are met.)

	E_{av} [lx]	E_{min} [lx]
Calculated values:	8.72	4.12
Required values according to class:	≥ 5.00	≥ 1.00
Fulfilled/Not fulfilled:	 ¹	

¹ Notice: To provide for uniformity, the actual value of the maintained average illuminance may not exceed 1.5 times the minimum value indicated for the class.

SIA VIZULO Solutions

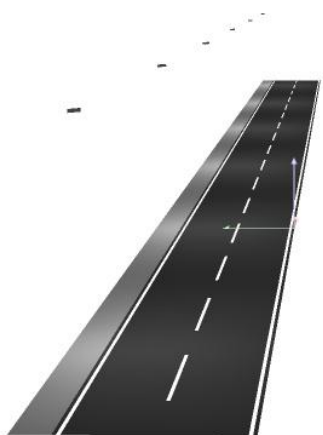
Ganību dambis 7a, Rīga, Latvija

Operator Ilona Kozare
Telephone + 371 28848361

Fax

e-Mail ilona.kozare@vizulo.com

Road 2 / 3D Rendering



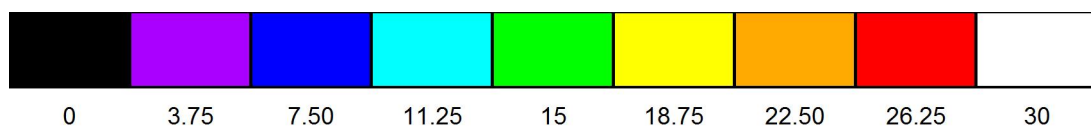
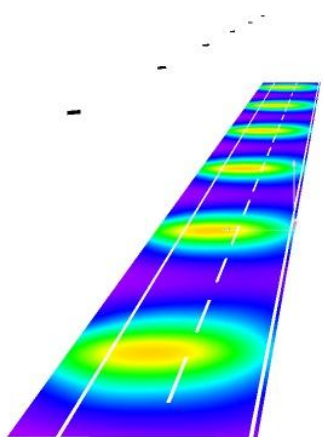
SIA VIZULO Solutions

Ganību dambis 7a, Rīga, Latvija

Operator Ilona Kozare
Telephone + 371 28848361

Fax
e-Mail ilona.kozare@vizulo.com

Road 2 / False Colour Rendering



lx

SIA VIZULO Solutions

Ganību dambis 7a, Rīga, Latvija

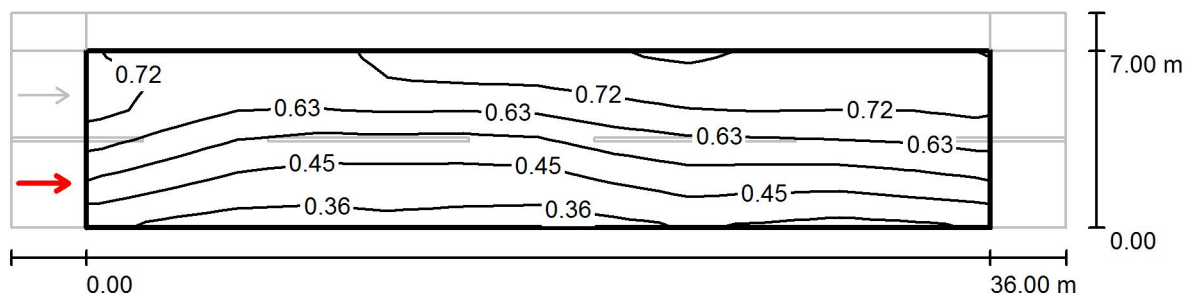
Operator Ilona Kozare

Telephone + 371 28848361

Fax

e-Mail ilona.kozare@vizulo.com

Road 2 / Valuation Field Roadway 1 / Observer 1 / Isolines (L)

Values in Candela/m², Scale 1 : 301

Grid: 12 x 6 Points

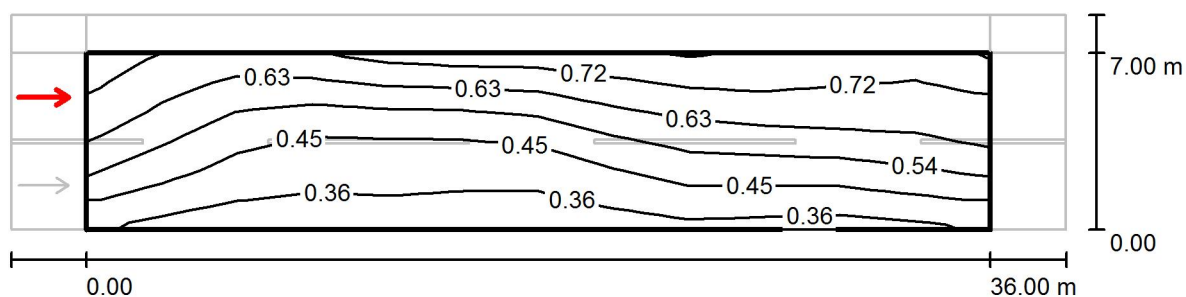
Observer Position: (-60.000 m, 1.750 m, 1.500 m)

tarmac: R3, q0: 0.070

	L_{av} [cd/m ²]	U0	UI	TI [%]
Calculated values:	0.58	0.59	0.77	5
Required values according to class ME5:	≥ 0.50	≥ 0.35	≥ 0.40	≤ 15
Fulfilled/Not fulfilled:	✓	✓	✓	✓

SIA VIZULO Solutions

Ganību dambis 7a, Rīga, Latvija

Operator Ilona Kozare
Telephone + 371 28848361Fax
e-Mail ilona.kozare@vizulo.com
Road 2 / Valuation Field Roadway 1 / Observer 2 / Isolines (L)


Values in Candela/m², Scale 1 : 301

Grid: 12 x 6 Points

Observer Position: (-60.000 m, 5.250 m, 1.500 m)

tarmac: R3, q0: 0.070

	L_{av} [cd/m²]	U0	UI	TI [%]
Calculated values:	0.53	0.60	0.75	7
Required values according to class ME5:	≥ 0.50	≥ 0.35	≥ 0.40	≤ 15
Fulfilled/Not fulfilled:	✓	✓	✓	✓